

Crop Progress

As reported by NASS on September 8, 2014

FARMERS BATTLE ARMYWORMS

Farmers in West and Middle Tennessee reported higher populations of armyworms. For the most part, the damage caused by these pests has been confined to pasture and hay fields, with some reports of armyworms in soybeans. Corn and early soybean harvests continued between rains. Wetter conditions also delayed hay and tobacco harvest. There were 4.7 days suitable for field work last week. Topsoil moisture levels were rated 3 percent very short, 15 percent short, 78 percent adequate and 4 percent surplus. Subsoil moisture levels were rated 5 percent very short, 17 percent short, 75 percent adequate, and 3 percent surplus.

Crop Condition % September 7 , 2014						
		Very Poor	Poor	Fair	Good	Excellent
Pasture	TN	1%	11%	30%	50%	8%
	US	6%	14%	32%	40%	8%
Corn	TN	0%	3%	17%	54%	26%
	US	2%	5%	19%	52%	22%
Cotton	TN	1%	3%	24%	58%	14%
	US	5%	12%	34%	38%	11%
Soybeans	TN	0%	3%	17%	58%	14%
	US	1%	5%	22%	53%	19%

Crop Progress					
		September 7, 2014	August 31, 2014	September 7, 2013	5 Yr. Average
Soybeans–Dropping Leaves	TN	13%	3%	5%	21%
	US	12%	5%	10%	17%
Cotton – Bolls Opening	TN	35%	27%	7%	40%
	US	39%	31%	23%	37%
Corn – Dented	TN	91%	82%	94%	97%
	US	69%	53%	61%	74%
Corn-Mature	TN	42%	18%	40%	66%
	US	15%	8%	8%	26%
Corn-Harvested	TN	8%	2%	9%	32%
	US	NA	NA	NA	NA

County Agent Comments

Corn Harvest is beginning, soybeans are setting pods and cotton finally got a few days of heat units. Cattle producers are enjoying good pastures and good cattle prices. **J.C. Dupree, Lauderdale County**

All crops progressing well. August and September showers keeping beans looking good. Still have issues with armyworms in lawns, pastures, and Bermuda grass hayfields. Getting isolated reports of armyworms and some corn earworms in soybeans. **Tim Campbell, Dyer County**

Producers and home owners are reporting fall armyworms in all areas of the county! **Jeff Roach, Benton County**

The farmers in Fayette County harvested a little corn this week but rains that moved in last weekend and in the middle of the week and end of the week limited that. Other activities were mainly spraying for armyworms. Having a bad year of them. Crops look good and when dry conditions happen corn harvest will be in full swing. **Jeff Via, Fayette County**

The corn harvest has begun with 150-225 bushel/acre reports. Early soybeans are doing quite well with many reporting 40-55 bushel/acre harvest. The cotton crop is doing well considering the type of growing conditions it's been through. A good rain last week enabled pastures to hold up through very hot and humid conditions. The big concern currently is the armyworm outbreak. **Walter Battle, Haywood County**

Producers have battled armyworms this week in pastures and hay fields. Some scattered rain showers occurred across the county early in the week. Grain crops continue to move toward maturity with some corn harvest taking place. The pace of corn harvest will pick up in the next two weeks with favorable drying weather predicted. **Jeff Lannom, Weakley County**

Timely rains have made a huge improvement in later set tobacco, double crop soybeans, pastures, and fall hay. **Ronnie Barron, Cheatham County**

Double crop soybeans have responded well to recent rainfall. Armyworms seen in Bermuda hayfields and forage sorghum last week. **Paul Hart, Robertson County**

Unusual amount of rainfall for this time year. Everything has greened. Rain has prevented fall hay harvest and tobacco harvest. **A. Ruth Correll, Wilson County**

Many reports of fall armyworm damage especially to alfalfa and Bermuda grass. **Kevin Rose, Giles County**

*Severe Armyworm infestation all across the county. Feeding on alfalfa, Bermuda grass, soybeans and every type of grass that grows in the county. **Ricky Skillington, Marshall County***

*Rain early in the week in the neighborhood of 0.75 inches and above was welcomed by most. Corn harvest is underway. **Mitchell Mote, Rutherford County***

*The wet weather has put folks behind on cutting tobacco and getting what has been cut into the barn. Corn yields continue to look very good and most bean fields look excellent as well. **Chris Hicks, Smith County***

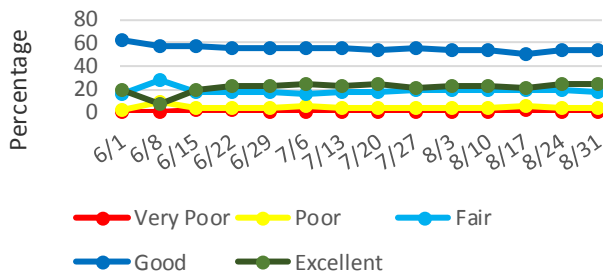
*Showers throughout the week produced from a trace to over 1.5 inches in a few isolated areas. Temperatures were slightly warmer. Showers slowed harvest progress, a number of producers continue to shell corn with yields around the 200 bushel per acre mark. A number of acres (5%) of early beans are completely defoliated, showers kept a few acres from being harvested. The first report of fall armyworms showed up mid-week in a hay field. Pastures are in good shape a few producers beginning their third harvest of hay. **Ed Burns, Franklin County***

*Our big players in the county report that corn and soybeans are looking "Excellent." Some are even a little hesitant to report how "Excellent." Everyone seems a bit tense and itchy to get a week of dry weather so that they can get out and start harvesting their corn. A few acres here and there have been put up, but most of our moisture ratings are in the range of 22-24% and they'd like them to be closer to 20% before they shift into high gear. About half the soybeans in the county are turning and it'll be another two weeks or so until they're underway. Maybe another 4 weeks for the later maturing varieties. All in all, we're doing pretty dang good here in Marion County. It almost feels wrong in a way to ask for no rain 'til Christmas, but right now I know some farmers that wouldn't complain an awful lot. We hope next week is drier than what's forecasted. **Matthew Deist, Marion County***

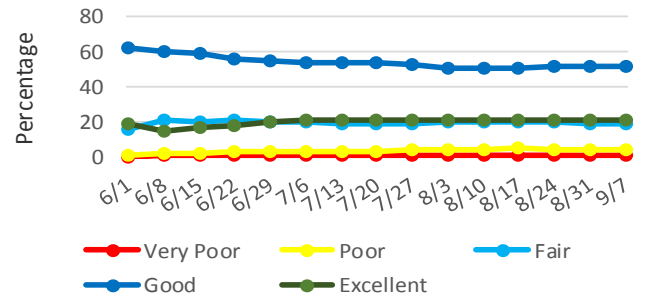
*50% of soybeans have started turning colors. **Patrick Sweatt, Bradley County***

*Pasture remains good. **Chris Ramsey, Sullivan County***

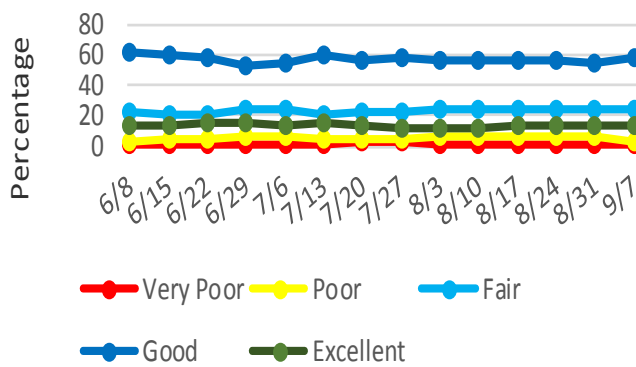
2014 Corn Crop Condition - Tennessee



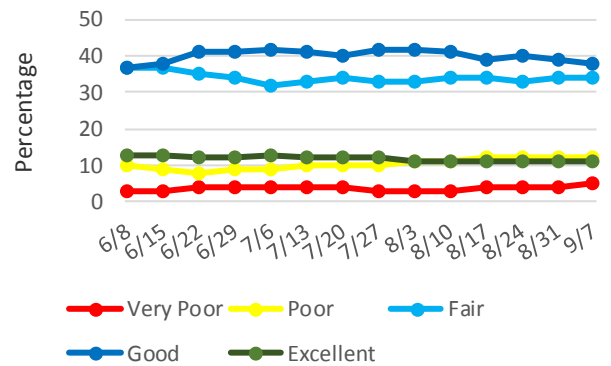
2014 Corn Crop Condition - U.S.



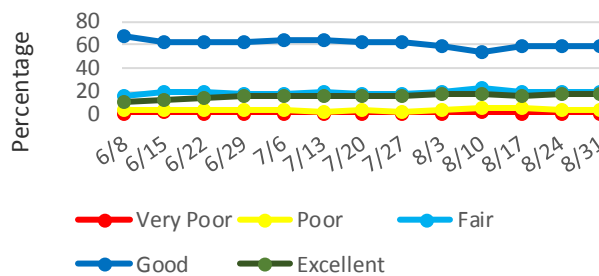
2014 Cotton Crop Condition - Tennessee



2014 Cotton Crop Condition -U.S.



2014 Soybeans Crop Condition - Tennessee



2014 Soybeans Crop Condition - U.S.

