

## Crop Progress

As reported by NASS on September 15, 2014

### CORN, SOYBEAN HARVEST CONTINUES, THEN STALLED BY RAIN

Producers continued their harvest of corn, early soybeans, and milo but rain hindered progress late in the week. Though reminiscent of the wet weather that slowed plantings, these rains benefitted late soybeans and pasture. As of September 1, record corn yield and production for the State was forecast. There were reports of armyworms in Bermuda grass and disease in tobacco. Rains slowed hay harvest and there are quality concerns. There were 4.5 days suitable for field work last week. Topsoil moisture levels were rated 1 percent very short, 14 percent short, 77 percent adequate and 8 percent surplus. Subsoil moisture levels were rated 2 percent very short, 18 percent short, 76 percent adequate, and 4 percent surplus.

Crop Condition % September 14 , 2014						
		Very Poor	Poor	Fair	Good	Excellent
Pasture	TN	1%	10%	30%	51%	8%
	US	6%	13%	31%	42%	8%
Corn	TN	0%	3%	15%	52%	30%
	US	2%	5%	19%	52%	22%
Cotton	TN	1%	5%	24%	56%	14%
	US	5%	13%	33%	38%	11%
Soybeans	TN	1%	3%	17%	58%	21%
	US	1%	5%	22%	53%	19%

Crop Progress					
		September 14, 2014	September 7, 2014	September 14, 2013	5 Yr. Average
Soybeans–Dropping Leaves	TN	30%	13%	15%	34%
	US	24%	12%	24%	32%
Soybeans-Harvested	TN	3%	-	3%	3%
	US	NA	NA	NA	NA
Cotton – Bolls Opening	TN	49%	35%	14%	53%
	US	51%	39%	34%	49%
Cotton Harvested	TN	--	NA	--	2%
	US	6%	NA	4%	7%
Corn – Dented	TN	96%	91%	97%	99%
	US	82%	69%	79%	85%
Corn-Mature	TN	67%	42%	63%	79%
	US	27%	15%	20%	39%
Corn-Harvested	TN	20%	8%	19%	45%
	US	4%	NA	4%	9%

### **County Agent Comments**

*Corn harvest has begun. Early group 3 soybeans are being harvested. All crops continue to progress toward maturity and harvest.* **Tim Campbell, Dyer County**

*The farmers in Fayette County started the week off full blast harvesting milo and corn. Some started on some earlier beans. Rain moved in Thursday and there were reports of 2-8 inches. The rain where we did not have flooding was good for the later beans, bad, if you will, for corn harvest. Lines are already forming and trucks have to wait at drop off locations. Corn yields that I have heard about have been good. When it dries up, farmers will be back at it-harvest wise. Cotton defoliation may start by the end of next week.* **Jeff Via, Fayette County**

*The bad is that rains 6+ inches put a halt to all farming activities as County producers were ramping up harvest. The good is that it was beneficial to late soybeans and vegetable crops, and it helped pastures recuperate from the heavy armyworm infestation.* **Walter Battle, Haywood County**

*Combines and grain trucks were rolling until stopped by rain on Thursday morning. Excellent yields in the 200 bushel range are being reported. Producers were also busy seeding cover crops, pastures and forage crops. Rainfall of varying amounts was reported county-wide ranging from .25" up to and over 1 inch.* **Jeff Lannom, Weakley County**

*Pastures are beginning to dry out. Corn harvest is underway.* **Kevin Rose, Giles County**

*We didn't get any rain but cloudy conditions slowed everything down. We are dry in a lot of the county.* **Larry Moorehead, Moore County**

*The wet weather is causing problems for tobacco growers as hollow stalk and angular leaf spot are taking their toll on plants still in the field. Fall hay cutting has also been delayed and quality is declining.* **Chris Hicks, Smith County**

*Corn harvest is underway in the county with very good yields reported. Soybeans are reaching maturity with some early beans drying down. Cotton is setting bolls with open bolls in lower canopy in some fields. Pastures are looking good and cattle are in good condition.* **J.C. Dupree, Lauderdale County**

*Corn harvest has started and going slow with high yields.* **Jake Mallard, Madison County**

*No rain and low humidity made for an excellent week of harvest. Corn harvest is in full swing with about 30% of the crop harvested. Yields are phenomenal with field averages of over 200 bushels to the acre being commonly reported and yields around the 250 mark not uncommon. A few beans have been harvested with yields in the 60 bushel range, about 5% of the crop is defoliated, the bulk of the full season beans are dropping leaves, and double crop beans are blooming and setting pods.*

*Pastures continue to look good, and most producers are harvesting a third cutting of hay.* **Ed Burns, Franklin County**

*Our farmers had a bit of a chance to harvest their corn last week, but again a few showers mid-week and some over the weekend cut short an otherwise productive week. About 35-40% of the soybeans in the county are either turning or dropping leaves with a some acreage already harvested. This week it appears that we will get to enjoy temperatures no higher than 87 degrees, but have to accept some rain early on. Fortunately, the rest of the week has a good chance to dry off. That being said, hopefully our farmers can stay in the field to get these crops up before the prices drop any further.*

**Marion Matthew Deist, Marion County**

*Corn silage harvest is all but over. Most soybeans are looking good with the exception of double-crop beans that were behind a late wheat harvest. Second-cutting hay harvest still making good progress.* **John Wilson, Blount County**

*Rain late this week has helped improve soil moisture.* **Chris Ramsey, Sullivan County**

*This seems to be the time of year when things are in the wait mode. Row croppers are just waiting until time to harvest but expecting a good yield. Tobacco harvest is continuing with some late tobacco just topped. Fall hay harvest is continuing. There was some fall armyworm damage in bermudagrass reported.* **Ruth Correll, Wilson County**

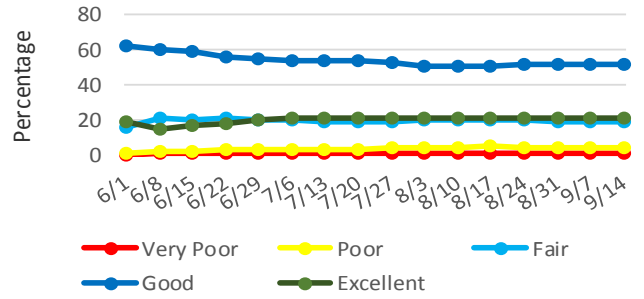
*Spotty showers all week so no field work. Still have hay standing that desperately needs cutting.*

**John Goddard, Loudon County**

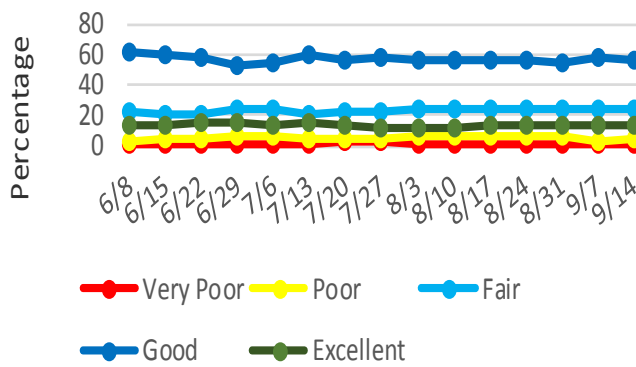
### 2014 Corn Crop Condition - Tennessee



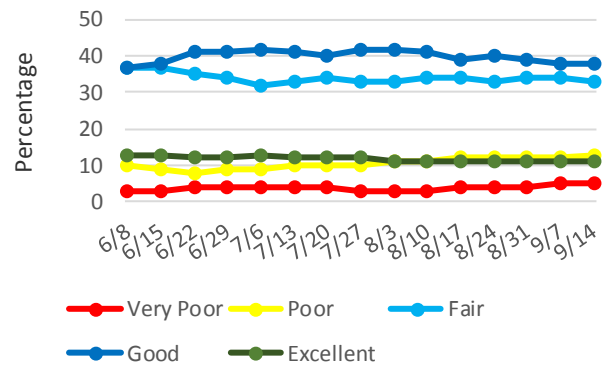
### 2014 Corn Crop Condition - U.S.



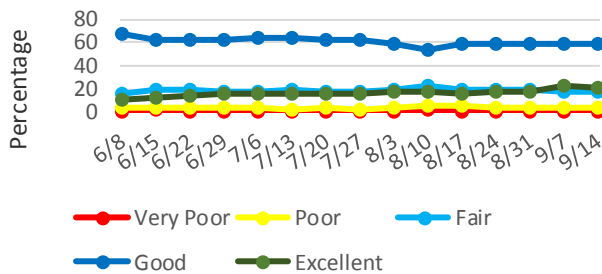
### 2014 Cotton Crop Condition - Tennessee



### 2014 Cotton Crop Condition -U.S.



### 2014 Soybeans Crop Condition - Tennessee



### 2014 Soybeans Crop Condition - U.S.

